

SERCO
LOADERS

GRYB

FORESTRY & LAND CLEARING

205 | 230

SERIES LOADERS



The Serco 205 and 230 Knuckleboom Loaders are built for those who demand superior lifting power and control in the toughest work environments. These truck-mounted heavy-duty loaders are the go-to choice for professionals across multiple industries, including forestry, construction, pole handling, pipeline operations, scrap recycling, and waste management.

**MADE IN
AMERICA
& BUILT
FOR THE
TOUGHEST
JOBS.**

**BOOST YOUR LIFT CAPACITY
BY 3,000 LBS WITH THE
230 SERIES**

205 | 230

SERIES LOADERS

KEY FEATURES

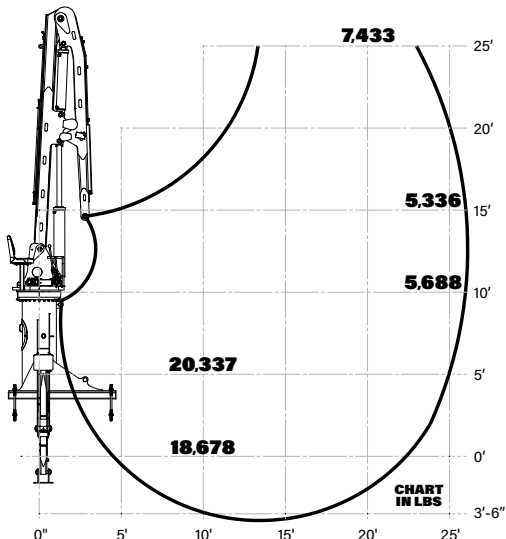
- 400° rotation.
- Stabilizer pads - 14"x14".
- In-frame tank with sight gauge.
- Heavy lift loader for a wide variety of applications.
- High value pole handling.
- Logging for large diameter logs/tree length.
- Can be configured to rest the grapple completely behind or above the cab with a grapple rest.
- Compatible with Serco grapples designed for use for in pole handling, logging and scrap handling.
- Excellent scrap handling characteristics that allow for heavy lift at extended reaches when used for scrap collection.
- Simple hydraulic system proven in cold, wet and corrosive environments due to road maintenance in Winter and proximity to salt water when used in coastal areas.

Options

- Continuous rotation.
- 4 ft. Extenda-Boom options for 25 ft. to 29 ft. overall reach.
- LED light kits.
- Heated operator seat & hot-grip joystick handles.
- Compatible with all Serco grapples.
- PTOs & hydraulic pumps available.
- Single fan Hydraulic Oil Cooler w/ guard & sending unit mounted on head or shipped loose.
- 205** 25' knuckle boom - 10° dog leg (over-cab boom).
- 205** Truck cab guard w/ boom rest (for over-cab models).

205 LIFTING CHART

20,600 lbs. lift capacity at 10 ft. radius



230 LIFTING CHART

23,600 lbs. lift capacity at 10 ft. radius

