

# SERCO 170 SERIES

LOG AND PULP LOADERS



# SERCO 170 SERIES

## SPECIFICATIONS

### ENGINES & DRIVE LINE

John Deere 6068T Tier III, 185 HP Diesel Engine

Electrical: 24 Volt Electrical System  
Circuit breaker protection  
2 Cab LED work lights  
2 LED boom lights

Fuel Reservoir: 75 Gallons with lockable cap

Cold weather starting package with engine glow plugs and engine block heater

Pump Drive: Pump disconnect clutch

### OPERATORS CAB

40" x 51" Cab (Isolated on 170-B)  
Opening roof window, tinted safety glass  
AM/FM/CD  
Windshield wiper/washer, defroster fan, dome light  
Heater  
Fully adjustable seat with armrests  
Parker IQAN Electronic Monitor System  
Heavy duty front swing out guard  
12v power point  
CB Radio

### HYDRAULIC SYSTEM 170-A

- Pumps: One (1) tandem & one single vane hydraulic pump with individual sections for main, secondary and swing circuits.
- Valves: Stack type, located under platform deck
- Swing System: Planetary gearbox powered by hydraulic motor driven 39" internal tooth turntable bearing
- Controls: Mechanical 2-Lever joysticks and individual stabilizer levers
- Filtration: High efficiency dual in-tank return line filters
- Swivel: Serco designed and built continuous swivel with ductile spool and chrome plated housing
- Oil Cooler: High-capacity oil cooler
- Cylinders:
  - Main (1) 7" x 42" with 3-1/2" rod
  - Secondary (1) 6" x 36" with 3" rod
  - Stabilizers (4) 6" x 24" with 3" rods

All cylinders have ductile pistons and glands with wear rings and chrome plated rods.

### HYDRAULIC SYSTEM 170-B

- Pumps: Two (2) tandem vane hydraulic pumps with individual sections for main, secondary, swing circuit and dedicated vane pump for circle slasher operation
- Valves: Stack type with servo actuators, located under platform deck
- Swing System: Double planetary gearbox powered by hydraulic motor driven 39" internal tooth turntable bearing.
- Controls: Servo 2-Lever hydraulic joysticks and individual stabilizer levers
- Filtration: High efficiency dual in-tank return line filters
- Swivel: Serco designed and built continuous swivel with ductile spool and chrome plated housing.
- Oil Coolers: High-capacity hydraulic oil cooler

- Cylinders:
  - Main (1) 7" x 42" with 3-1/2" rod
  - Secondary (1) 6" x 36" with 3" rod
  - Stabilizers (4) 6" x 24" with 3" rods

All cylinders have ductile pistons and glands with wear rings and chrome plated rods

### STRUCTURAL

Lower frame: Heavy-duty Sub-frame assembly  
Wide stance stabilizers, cylinder mounted lock valves

Booms: 27' Knuckle boom fabricated from high strength steel and reinforced at all stress points

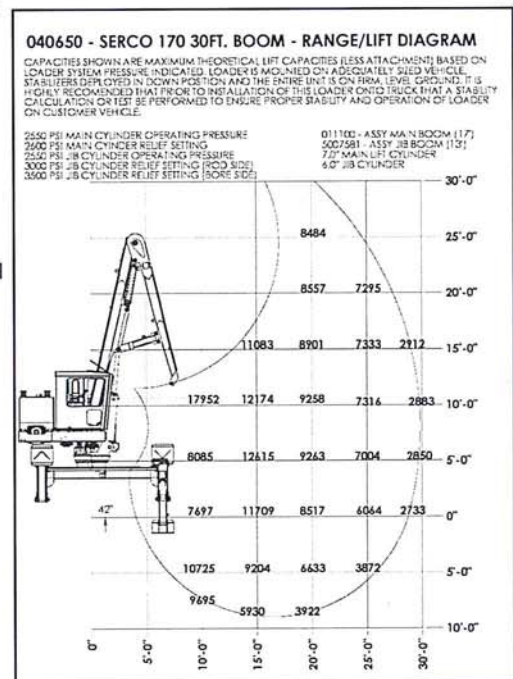
Boom Pivot Pins: 2 1/2" main boom pin and 2 1/2" secondary boom pin made from high strength alloy steel, steel bushings

Swing Bearing: 39" outside diameter, internal gear

Stabilizers: 208" Spread at grade  
198" Spread at max. down reach  
11" Reach below grade

### OPTIONAL

- Bolt on cylinder glands
- Slasher control packages for all popular makes of slashers
- Boom options to 30'
- Foldaway stationary heels
- Hydraulic joystick controls
- Cab air conditioning
- Automatic and manual greaser systems
- 120 Gallon fuel tank
- Auxiliary hydraulic oil cooler
- Carrier drive packages
- Hydraulic oil tank heater
- Auxiliary lighting package
- Full range of attachments including continuous rotation graples



SPECIFICATIONS SUBJECT TO CHANGE WITHOUT PRIOR NOTICE

# SERCO LOADERS

511 25th Ave.  
Two Harbors, MN 55616  
Phone: (218) 834-5118  
FAX: (218) 834-2498  
Email: serco@sercoloaders.com  
Web: www.sercoloaders.com



PRINTED IN USA