

SERCO 300



SERCO 300

SPECIFICATIONS

ENGINES & DRIVE LINE

John Deere 6068HF Tier III, 185 HP
(Other engines available as optional equipment)
Electrical: 24V System
Circuit Breaker Protection
2 Cab Mounted Work Lights
2 Halogen Boom Lights

Cold Weather Starting Package includes Glow Plugs and Engine Block Heater
Pump Drive: Direct Driven, Dual Pad

OPERATORS CAB

40" x 60-1/2" Cab
Opening Roof Window, Tinted Safety Glass
AM/FM CD Stereo
Windshield Wiper/Washer, Defroster Fan, Dome Light
Climate Control Air Conditioning / Heater with Pressurized Cab
Fully Adjustable Seat with Arm Rests
Digital Gauges: Tachometer, Hour Meter, Fuel Level, Engine Oil Pressure, Volts, Coolant Temperature
IQAN Engine / Hydraulic Monitor & Control System
Heavy Duty Front Swing Out Guard
Swing-Open Door with Sliding Window
Right Side Sliding Window
Two (2) 12 Volt Power Points

HYDRAULIC SYSTEM

Pumps: Tandem, Variable Displacement On-Demand with Economy Management System and Dedicated Slasher Pump
Valves: Stack Type, Located Under Platform Deck
Swing System: Double Planetary Swing Gearbox with Piston Motor. 11 RPM Swing Speed, 55,000 ft.-lbs. swing torque
Controls: Pilot Operated Joystick Levers, Foot Swing Pedal, Individual Electrical Switches for Stabilizers and Single Switch for Simultaneous Stabilizer Actuation
Filtration: Dual In-tank Return Line Filters
Swivel: Serco Designed and Built Continuous Swivel with Ductile Iron Spool and Chrome-Plated Housing
Oil Cooler: High Capacity Located on Platform Deck
Cylinders: Main (2) 5" x 50" x 3" Rods
Jib (1) 6" x 45-1/2" x 3-1/2" Rod
Stabilizers (4) 7" x 24" x 4" Rods

All Cylinders Have Bolt-On Heads, Ductile Iron Pistons and Glands, with Load Locks, Wear Rings and Heavy Chrome Plated Rods

STRUCTURAL

Lower frame: Heavy Duty, Fabricated Subframe Assembly with Structural Counterweight
Tail Swing: 8' 8"
Booms: 32'0" Knuckle Boom Fabricated From High-Strength Steel and Reinforced at all Stress Points
Swing Bearing: 54" Diameter, External Gear
Stabilizers: 208" Spread at Grade
14" Reach Below Grade

CAPACITIES

Fuel: 125 Gallons with Lockable Cap
Hydraulic: 135 Gallons
Unit Weight: 32,500 lbs.

MISCELLANEOUS

Tilting Engine Shroud
Engine & Hydraulic Tank Heater
Stabilizer Position Interlock System

OPTIONAL

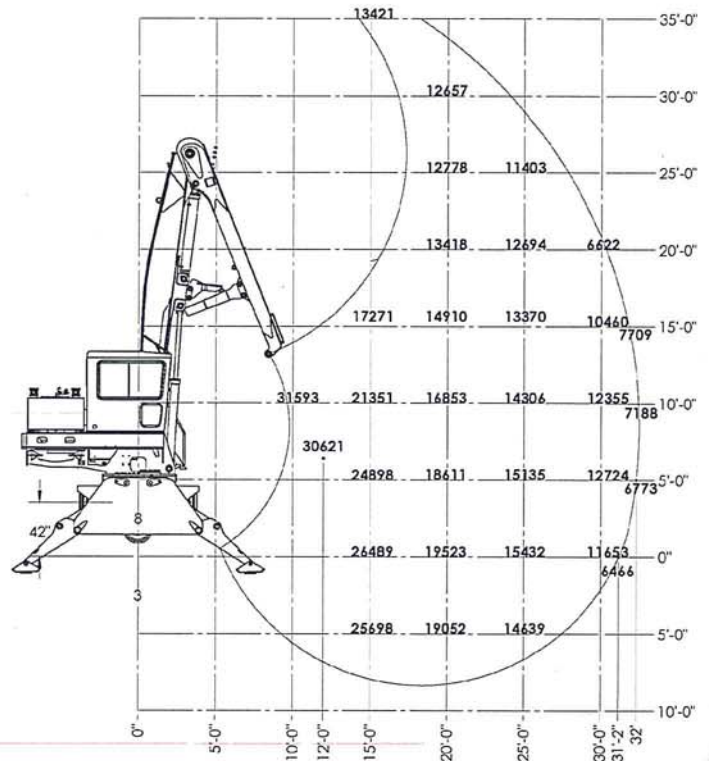
Live Heel Boom
Fold-A-Way Stationary Heels
Automatic and Manual Greaser Systems
Electric Hydraulic Oil Fill Pump
Carrier Hydraulic Drive Packages
Auxiliary Lighting Package
Full Range of Attachments Including Continuous Rotation Grapples

040700 - SERCO 300 32FT. BOOM - RANGE/LIFT DIAGRAM

CAPACITIES SHOWN ARE MAXIMUM THEORETICAL LIFT CAPACITIES (LESS ATTACHMENT) BASED ON LOADER SYSTEM PRESSURE INDICATED. LOADER IS MOUNTED ON ADEQUATELY SIZED VEHICLE. STABILIZERS DEPLOYED IN DOWN POSITION AND THE ENTIRE UNIT IS ON FIRM, LEVEL GROUND.

011102 - ASSY MAIN BOOM
011103 - ASSY JIB BOOM

200247 - CYL ASSY MAIN
200245 - CYL ASSY JIB



SPECIFICATIONS SUBJECT TO CHANGE WITHOUT PRIOR NOTICE

SERCO LOADERS

611 2nd Ave.
Two Harbors, MN 55616
Phone: (218) 834-5118
FAX: (218) 834-2498
Email: serco@sercoloaders.com
Web: www.sercoloaders.com



PRINTED IN USA